

# SERPENTINE LINK TRACK MARTINS CREEK FOREST BLOCK

LONG FOOTED POTOROO DETECTION WITHIN VICFOREST  
SCHEDULED LOGGING COUPE

## Report on remote camera survey of *Potorous longipes*

<b>Date of Report</b>	06/08/2011
<b>Study area</b>	Within the VicForests scheduled logging coupe listed below adjacent to Serpentine Link Track. See study location map and results section below for more details.
<b>Coupe Numbers Concerned</b>	836-511-0012, 836-510-0009, 836-513-0009, 836-513-0012
<b>Date of study</b>	23/04/2011 – 23/06/2011
<b>Aim of study</b>	To determine presence/absence of <i>Potorous longipes</i>
<b>Method of study</b>	Baited remote survey cameras
<b>Summary</b>	<p><i>Potorous longipes</i> was recorded once by way of video footage within scheduled logging coupe 836-511-0012 and nearby to scheduled logging coupes 836-510-0009, 836-513-0009, 836-513-0012.</p> <p>This detection is further detailed below.</p>
<b>Surveyors</b>	Andrew Lincoln, Robert Johnston, Owen Hanson, Suzanna Fox, Frank Bird, Tim Gentle
<b>Author</b>	Andrew Lincoln asl80@hotmail.com

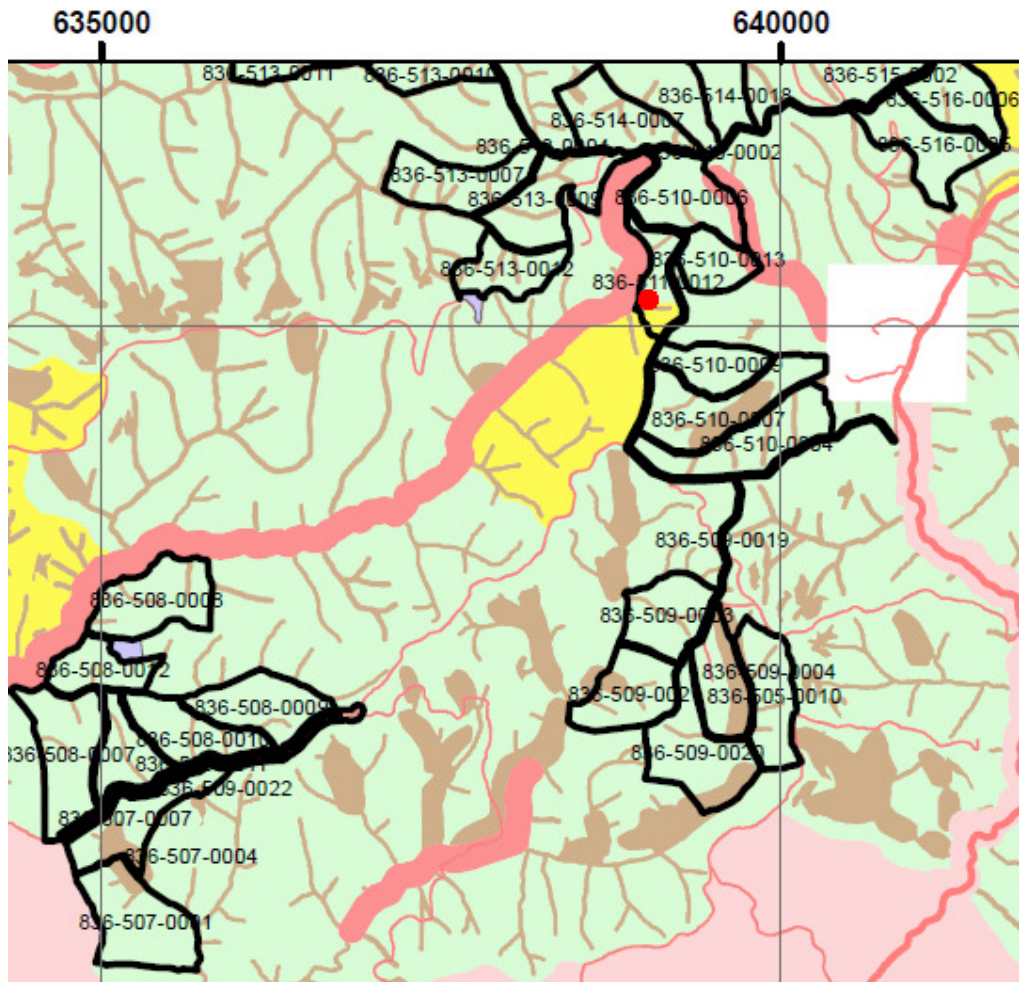
**Study location**

Incorporating coupes listed in “*Coupe numbers concerned*” above and displayed on the following map titled Figure 1. Detection site has been drawn on this map and is explained according to the following key.

**Map Key:**

- *Potorous longipes* remote camera detection

Figure 1: Study area displayed on; Detail from *TRP MAP – Orbost (2011 – 2016)*, [http://www.vicforests.com.au/assets/docs/planning/trp%20eg/trp\\_map\\_bendoc.pdf](http://www.vicforests.com.au/assets/docs/planning/trp%20eg/trp_map_bendoc.pdf), 06/08/11  
Datum: GDA 94



**Results of survey**

1. *P. longipes* camera detection.  
Camera used; Scout Guard  
Camera settings; 1x 20 second video  
Bait; Honey/Oats/Peanut Butter/Truffle oil

*Camera Location*

55H 0638943 // 5860177  
(GDA94, UTM/UPS)

1 recording was on; 18/06/2011 at 21:48 (Figure 2-3 below)  
(Figure 4 is a still from a colour recording taken at this location)

Figure 2.



Figure 3.



Figure 4.

