

JUNGLE CREEK – ABERDEEN ROAD GOONGERAH FOREST BLOCK

LONG FOOTED POTOROO DETECTION WITHIN VICFOREST
SCHEDULED LOGGING COUPE

Report on remote camera survey of *Potorous longipes*

Date of Report	06/08/2011
Study area	Near Aberdeen Road in the Jungle Creek headwaters and within the VicForests scheduled logging coupe listed below. See study location map and results section below for more details.
Coupe Numbers Concerned	891-507-0006, 891-509-0003
Date of study	30/04/2011 – 05/08/2011
Aim of study	To determine presence/absence of <i>Potorous longipes</i>
Method of study	Baited remote survey cameras
Abstract	<p><i>Potorous longipes</i> was recorded once by way of video footage within scheduled logging coupe 891-507-0006 and nearby to scheduled logging coupes 891-509-0003.</p> <p>This detection is further detailed below.</p>
Surveyors	Andrew Lincoln, David Caldwell, Robert Johnston
Author	Andrew Lincoln asl80@hotmail.com
	06/08/2011

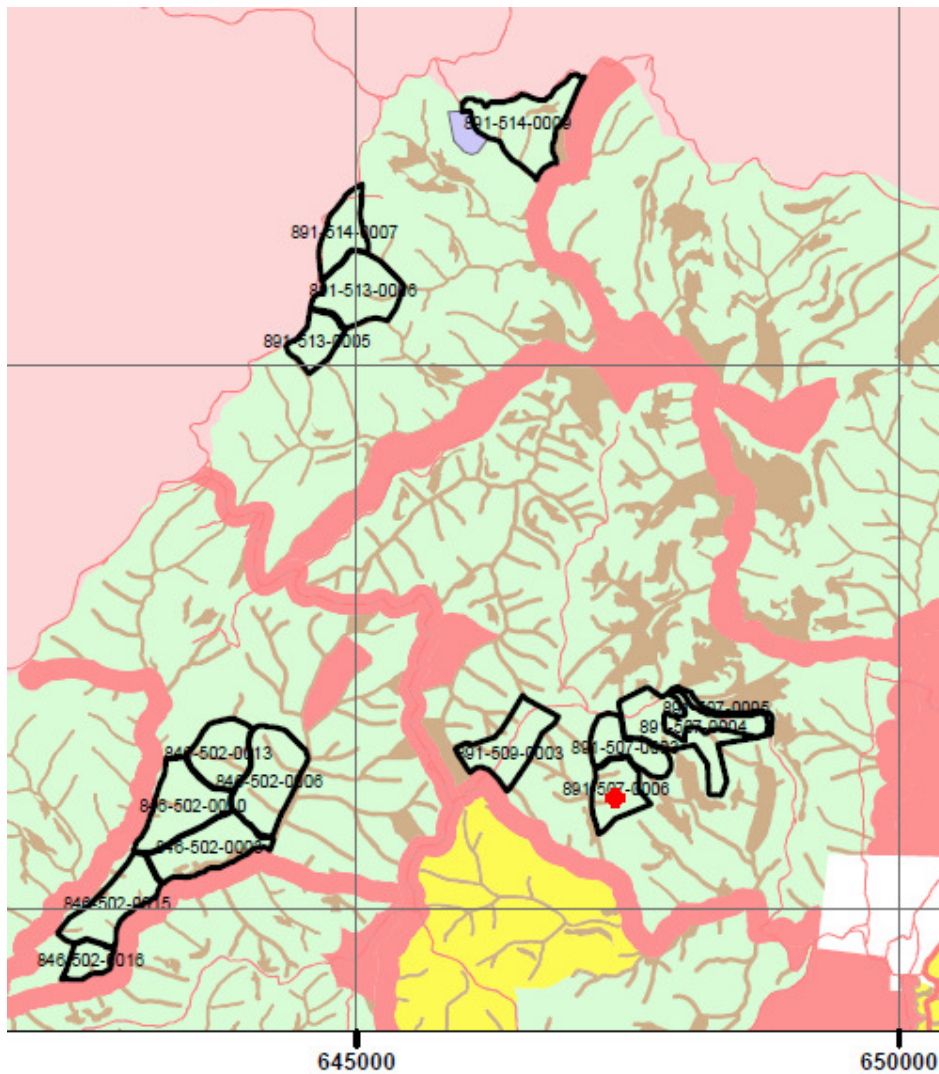
Study location

Incorporating coupes listed in “*Coupe numbers concerned*” above and displayed on the following map titled Figure 1. Detection site has been drawn on this map and is explained according to the following key.

Map Key:

- *Potorous longipes* remote camera detection

Figure 1: Study area displayed on; Detail from *TRP MAP –Bendoc (2011 – 2016)*, http://www.vicforests.com.au/assets/docs/planning/trp%20eg/trp__map_bendoc.pdf, 06/08/11
Datum: GDA 94



Results of survey

1. *P. longipes* camera detection.
Camera used; Scout Guard
Camera settings; 1x 20 second video
Bait; Honey/Oats/Peanut Butter/Truffle oil

Camera Location

55H 0647349 // 5870999
(GDA94, UTM/UPS)

1 recording was on; 12/05/2011 at 18:49 (Figure 2-3 below)
(Figure 4 is a recording of a lyrebird from later on in this cameras deployment)

Figure 2.



Figure 3.



Figure 4.

