

LITTLE ARETE TRAIL KUARK FOREST BLOCK

LONG FOOTED POTOROO DETECTION WITHIN VICFOREST
SCHEDULED LOGGING COUPE

Report on remote camera survey of *Potorous longipes*

Date of Report	05/03/2011
Study area	Within the VicForests scheduled logging coupe listed below. See study location map below for more details.
Coupe Numbers Concerned	830-503-0006, 830-503-0014
Date of study	12/12/2010 –26/01/2011
Aim of study	To determine presence/absence of <i>Potorous longipes</i>
Method of study	Baited remote survey cameras
Abstract	<p>This survey detects the presence of <i>Potorous longipes</i> by way of remote camera video footage within or adjacent to the coupes listed above.</p> <p>This detection is further detailed below.</p>
Surveyors	Brittany Chapman, Andrew Lincoln, David Caldwell, Robert Johnston
Author	Andrew Lincoln asl80@hotmail.com

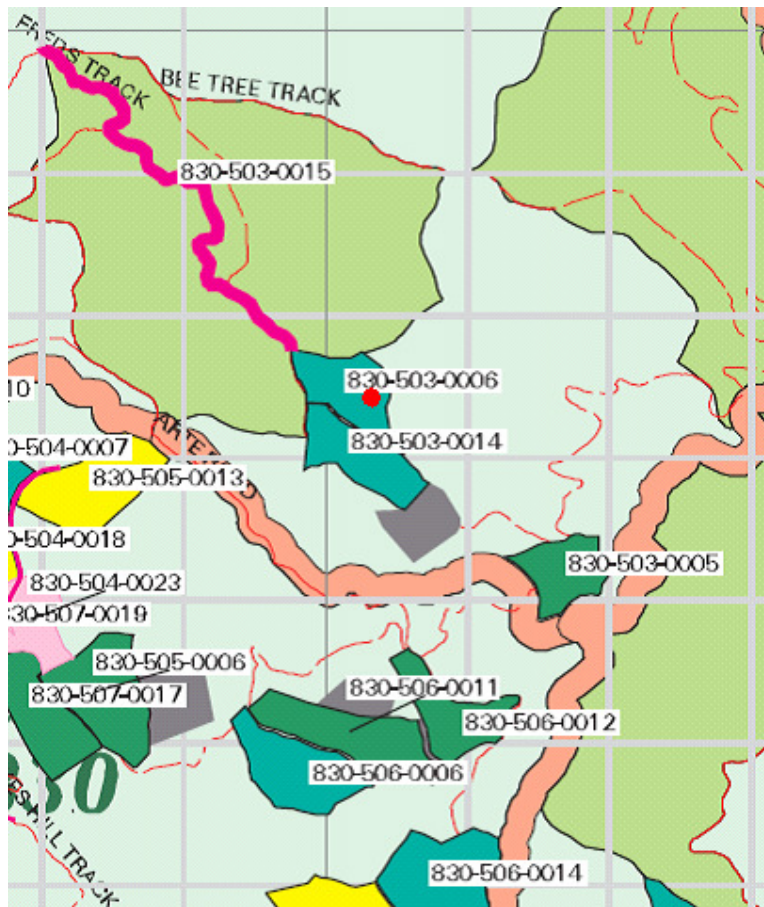
Study location

Incorporating coupes listed in “*Coupe numbers concerned*” above and displayed on the following map titled Figure 1. Detection site has been drawn on this map and is explained according to the following key.

Map Key:

- *Potorous longipes* remote camera detection

Figure 1: Study area displayed on; Detail from *East Gippsland FMA – Orbost District, Approved Timber Release Plan with amendments applied - Harvest Years 200910 – 201314 – Vicforests, 23/08/10*
Datum: GDA 94



Results of survey

1. *P. longipes* remote camera detection.
Camera used; Scout Guard
Camera settings; 1x 30 second video
Bait; Honey/Oats/Peanut Butter/Truffle oil

Camera Location

55H 06660291 // 5847428
(GDA94, UTM/UPS)

1 recording was on; 28/12/2010 at 00:16

[(Corresponding to Figure 2 below. Note; figure 2a is the opening image of the video and figures 2b is a still captured from later on in the 30 second video.)

Figure 2c. is a still captured from a preceding recording at this location.
(27/01/2010 at 08:31 – 30sec)]

Figure 2a.

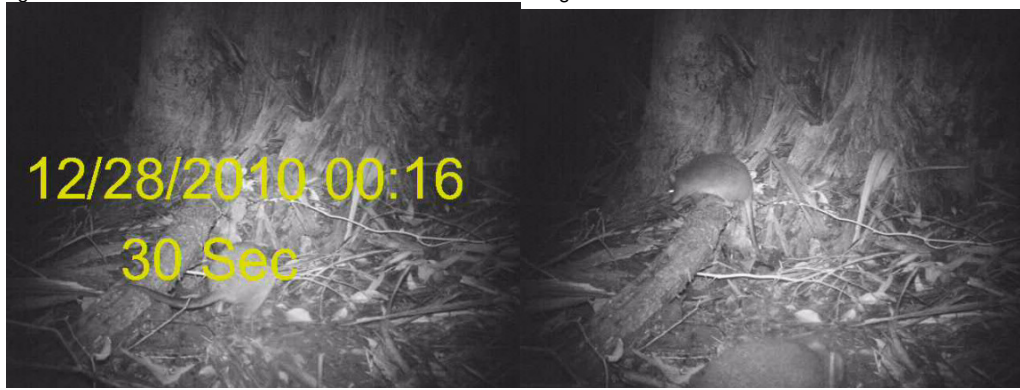


Figure 2b.

Figure 2c.



Summary

2 *Potorous longipes* individuals were recorded once by video footage within scheduled logging coupe 830-503-0006, adjacent to scheduled logging coupe 830-503-0014.

Author

Andrew Lincoln
asl80@hotmail.com

05/03/2011