

SCANLON CREEK MARTINS CREEK FOREST BLOCK

LONG FOOTED POTOROO DETECTION WITHIN VICFOREST
SCHEDULED LOGGING COUPE

Report on remote camera survey of *Potorous longipes*

Date of Report	21/02/2011
Study area	Within the VicForests scheduled logging coupe listed below adjacent to Scanlon Creek, between Riddle Creek Track and Paradise Ridge Road. See study location map below for more details.
Coupe Numbers Concerned	836-501-0001
Date of study	10/11/10 – 08/02/11
Aim of study	To determine presence/absence of <i>Potorous longipes</i>
Method of study	Baited remote survey cameras
Abstract	<p>This survey detects the presence of <i>Potorous longipes</i> by way of remote camera video footage within the coupe listed above.</p> <p>This detection is further detailed below.</p>
Surveyors	Andrew Lincoln
Author	Andrew Lincoln asl80@hotmail.com

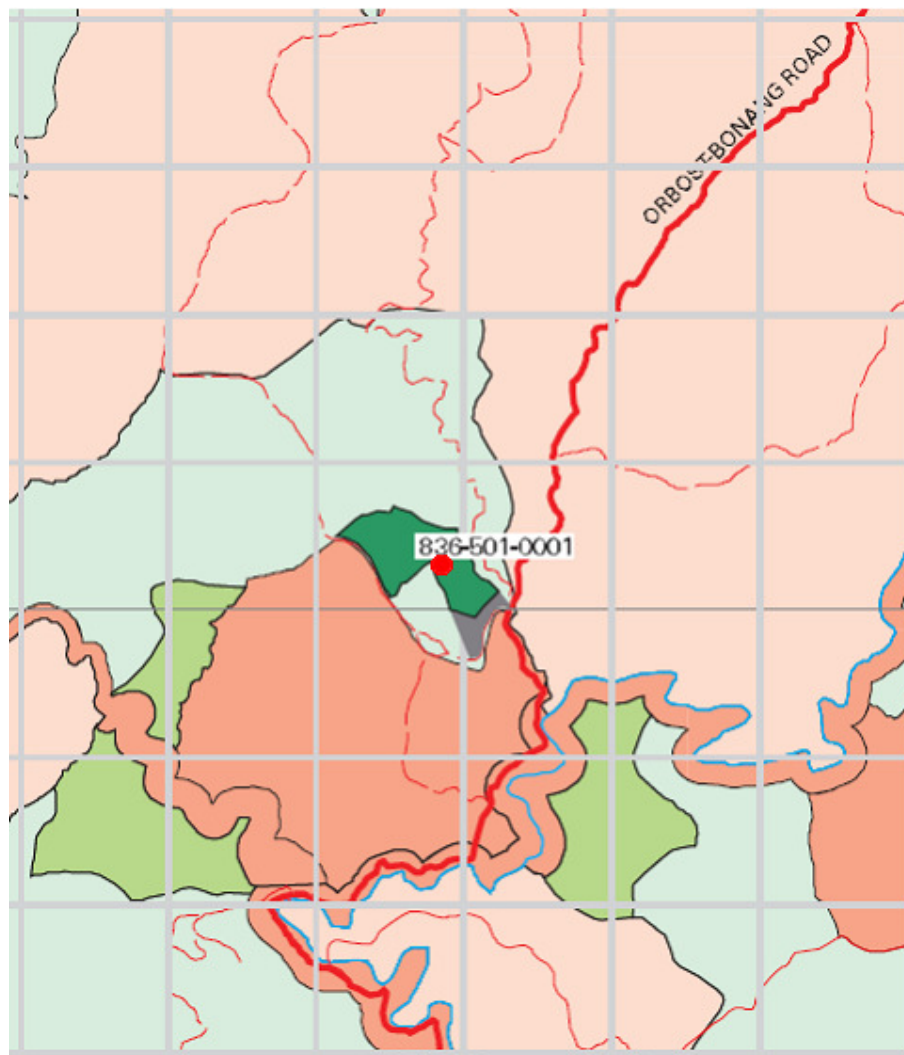
Study location

Incorporating coupes listed in “*Coup numbers concerned*” above and displayed on the following map titled Figure 1. Detection site has been drawn on this map and is explained according to the following key.

Map Key:

- *Potorous longipes* remote camera detection

Figure 1: Study area displayed on; Detail from *East Gippsland FMA – Bendoc District, Approved Timber Release Plan with amendments applied - Harvest Years 200910 – 201314* – Vicforests, 23/08/10
Datum: GDA 94



Results of survey

1. *P. longipes* camera detection.
Camera used; Scout Guard
Camera settings; 1x 30 second video
Bait; Honey/Oats/Peanut Butter/Truffle oil

Camera Location

55H 0636844 // 5850331 (+/- 6m)
(GDA94, UTM/UPS)

1 recording was on; 20/01/2011 at 02:20

(Corresponding to Figure 2 below. Note; figure 2a is the opening image of the video and figures 2b is a still captured from later on in the 30 second video)

Figure 2a.



Figure 2b.



Summary

Potorous longipes was recorded once by video footage within scheduled logging coupe 836-501-0001.

Author

Andrew Lincoln
asl80@hotmail.com

21/02/2011