

LITTLE YALMY RIVER CATCHMENT MARTINS CREEK FOREST BLOCK

LONG FOOTED POTOROO DETECTIONS WITHIN VICFOREST
SCHEDULED LOGGING COUPES

Report on remote camera survey of *Potorous longipes*

Date of Report	03/11/2010
Study area	Within the VicForests scheduled logging coupes listed below. In the vicinity of Serpentine Track, Little Yalmy Track and Little Yalmy Sidecut Track (within the Martins Creek Forest Block). See study location map below for more details.
Coupe Numbers Concerned	836-510-0006, 836-513-0004, 836-513-0007, 836-513-0010, 836-513-0011, 836-514-0002, 836-514-0004, 836-514-0007, 836-514-0016, 836-514-0017, 836-514-0018, 836-515-0009
Date of study	18/09/2010 – 19/10/2010
Aim of study	To determine presence/absence of <i>Potorous longipes</i>
Method of study	Baited remote survey cameras
Abstract	This survey detects the presence of <i>Potorous longipes</i> by way of video footage at four separate locations within or adjacent to the coupes listed above. These detections are further detailed below.
Surveyors	Owen Hanson, Andrew Lincoln, Robert Johnston, Frank Bird
Author	Andrew Lincoln asl80@hotmail.com

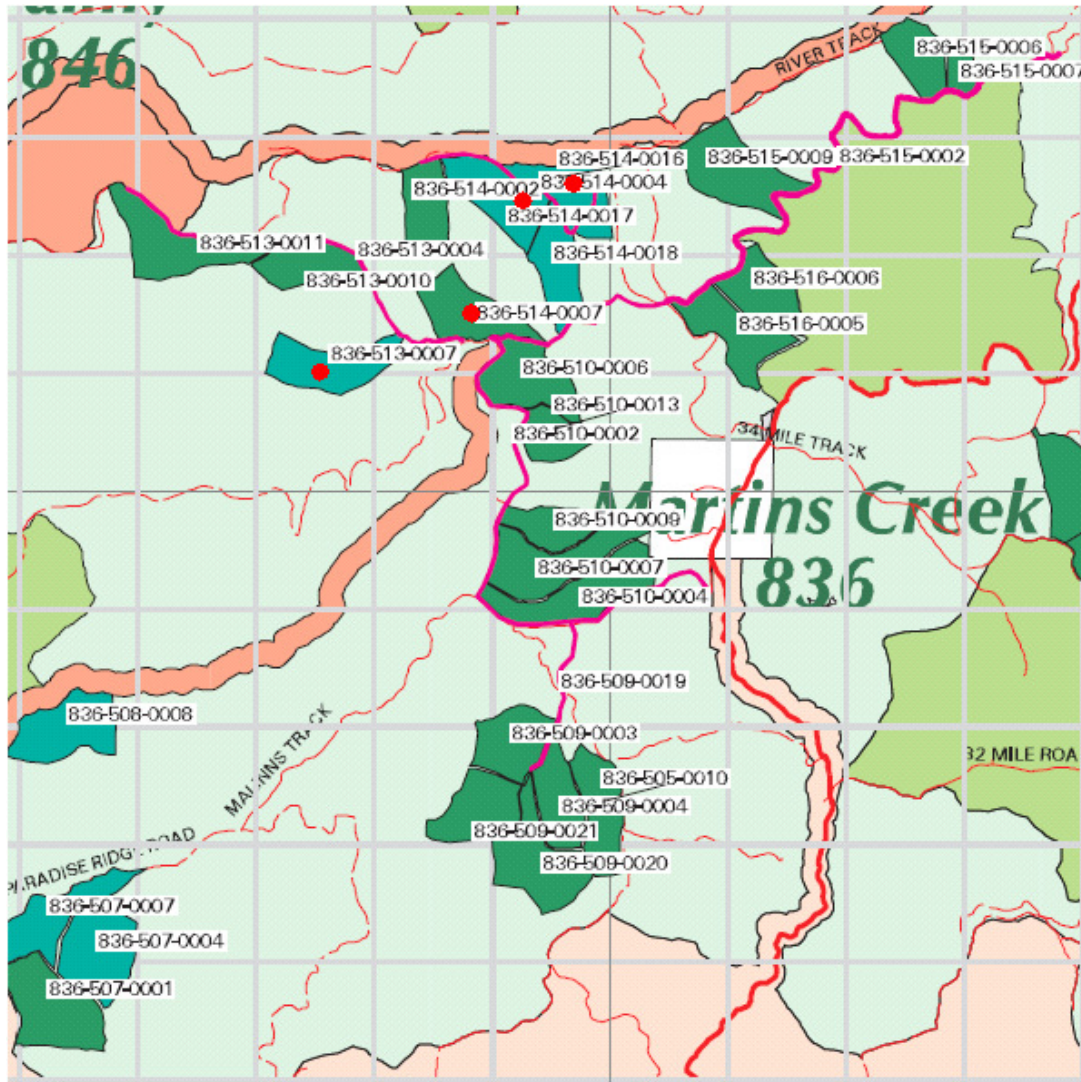
Study location

Incorporating coupes listed in “*Coup numbers concerned*” above and displayed on the following map titled Figure 1. Detection site has been drawn on this map and is explained according to the following key.

Map Key:

- *Potorous longipes* remote camera detection

Figure 1: Study area displayed on; Detail from *East Gippsland FMA - Orbost District, Approved Timber Release Plan with amendments applied - Harvest Years 200910 – 201314* – Vicforests, 23/08/10
Datum: GDA 94



Results of survey

1. *P. longipes* camera detection.
Camera used; Scout Guard
Camera settings; 1x 30 second video
Bait; Honey/Oats/Peanut Butter/Truffle oil

Camera Location

55H 0637513 // 5861009
(GDA94, UTM/UPS)

1 recording was on; 11/10/2010

(Corresponding to Figure 2 below. Note; figure 2a is the opening image of the video and figures 2b is a still captured from later on in the 30 second video)

Figure 2a.



Figure 2b.



2. *P. longipes* camera detection.
Camera used; Scout Guard
Camera settings; 1x 20 second video
Bait; Honey/Oats/Peanut Butter/Truffle oil

Camera Location

55H 0638728 // 5861504
(GDA94, UTM/UPS)

2 recordings were on; 23/09/2010 and 26/09/2010

(Corresponding to Figures 3-4 below. Note: Figure 4a is the opening image of the video and figure 4b is a still captured from later on in the 20 second video)

Figure 3a.



Figure 3b.



Figure 4a.



Figure 4b.



3. *P. longipes* camera detection.
Camera used; Scout Guard
Camera settings; 1x 30 second video
Bait; Honey/Oats/Peanut Butter/Truffle oil

Camera Location

55H 0639582 // 5862671
(GDA94, UTM/UPS)

2 recordings were on; 28/09/2010 and 29/09/2010
(Corresponding to Figures 5-6 below. Note: Figure 5a is the opening image of the video and figure 5b is a still captured from later on in the 30 second video)

Figure 5a.



Figure 5b.



Figure 6a.



Figure 6b.



Results of survey

4. *P. longipes* camera detection.
Camera used; Scout Guard
Camera settings; 1x 30 second video
Bait; Honey/Oats/Peanut Butter/Truffle oil

Camera Location

55H 0639234 // 5862515
(GDA94, UTM/UPS)

1 recording was on; 06/10/2010

(Corresponding to Figure 7 below. Note; figure 7a is the opening image of the video and figures 7b is a still captured from later on in the 30 second video)

Figure 7a.



Figure 7b.



Summary

Potorous. longipes was recorded by video footage on six different occasions at four different locations.

Author

Andrew Lincoln
asl80@hotmail.com

03/11/2010